

# School of Music

---

Arizona State University  
College Of Fine Arts

Presents

## *The Symphonic Band*

Richard E. Strange, Conductor  
Michael Watts, Guest Conductor  
Edward Madden, Guest Conductor  
Martin Schuring, Oboe Soloist  
Samuel Pilafian, Tuba Soloist

Greg Handel, Graduate Assistant  
Tim Trost, Graduate Assistant

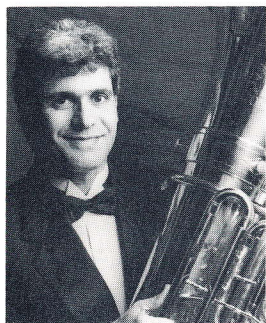
Tuesday, February 24, 1998, 7:30 PM  
Gammage Auditorium

### •Arizona State University Symphonic Band•

The ASU Symphonic Band, under Dr. Richard E. Strange, has given major concerts for the *Music Educators National Conference*, the *College Band Directors National Association*, the *Music Teachers National Association*, the *American Society of University Composers*, and the *American Bandmasters Association*. In **December of 1991**, the **Symphonic Band** presented the **final concert at the Mid-West International Band and Orchestra Clinic in Chicago, IL** (only the second U.S. University Band to be invited in the 51-year history of the Mid-West).

### •Samuel Pilafian•

Best known as a founding member of the internationally renowned Empire Brass Quintet, **Samuel Pilafian** now enjoys a rich career inside and outside the classical music world. He has performed and recorded with such diverse organizations as the Boston Symphony, Pink Floyd, the Metropolitan Opera, the New York Philharmonic, the Duke Ellington Orchestra, Lionel Hampton, the Orchestra of St. Luke, composer Philip Glass and actress/singer Bernadette Peters. In 1994 he was appointed Professor of Music and Conductor of the Concert Jazz Band at Arizona State University, having previously served for 20 years on the faculties of Boston University and their summer Tanglewood Institute.



As a solo jazz artist, Pilafian has recorded six compact discs on the Telarc, Summit, and Concord Jazz labels. Also, he has recorded a series of wind music compact discs for the Angel/EMI label with trumpeter Mark Gould. Recently, Pilafian became a member of Summit Brass. Recital and concerto performances this year will take him to Canada, Sweden, Germany, Spain, Switzerland, Japan, Italy, Austria, and England, as well as the United States.

Pilafian is currently President of T.U.B.A., a world wide tuba/euphonium interest organization with over three thousand members.

### •Martin Schuring•

**Martin Schuring**, Visiting Assistant Professor of oboe, joined the faculty of Arizona State University in 1992. Mr. Schuring studied at the Curtis Institute of Music with John de Lancie. He has held positions with the Hong Kong Philharmonic, The Florida Orchestra and the Phoenix Symphony Orchestra. Since 1980, Schuring has been a regular participant at the Grand Teton Music Festival, playing English horn and oboe in the Festival Orchestra as well as making frequent appearances on the Festival's chamber music series. In other summer activities, he has participated in the Bach Aria Festival, served as Professor of Oboe



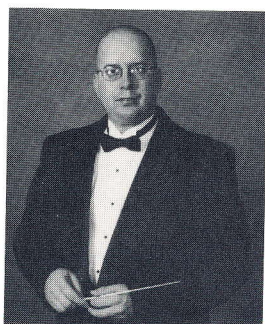
at the 1996 *Londrina* Music Festival in Brazil, and performed as Principal

Oboe of the *Orchestre Philharmonique Rhodanien* and Professor of Oboe at the *Academie Européenne de Musique* in *Tournon-sur-Rhône*, France.

Schuring has recorded for Philips, Koch International, and Summit Records, both as both soloist and orchestra player. Recently, he recorded the world premiere of an Oboe Concerto by Eric Funk with the Prague Radio Symphony (MMC label). He is hosting the 1998 Conference of the International Double Reed Society at Arizona State University June 2-6, 1998.

#### •Michael Watts•

**Michael Watts** is currently in his tenth year at Permian High School and third year as Director of Bands at Permian High School in Odessa, Texas.



Prior to this position, he was Associate Director of Bands at Permian High School, Director of Bands at Bonham Jr. High School in Odessa, Texas, and Director of Bands at Camelback High School in Phoenix, Arizona.

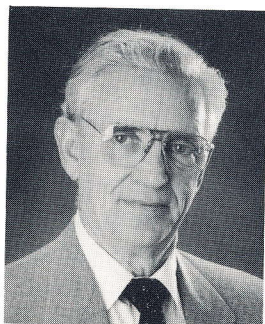
Under Watt's direction, the Permian High School Marching Band has reached the Texas State Marching Contest five times, placing as high as sixth, been in the finals of "Bands of America" twice, and has been nominated for the John Philip Sousa Foundation's Sudler Shield award. The Symphonic

Band is a consistent winner at festivals, never receiving less than a superior rating at every contest and festival entered.

Watts is a popular adjudicator and clinician who has judged in Arizona, New Mexico, Colorado, and Texas. He is a member of the Texas Music Educators Association, Texas Bandmasters Association, National Band Association, and Phi Beta Mu. "Mike" is a graduate of Arizona State University, and is proud to be a part of our "Sun Devil Pride."

#### •Edward Madden•

**Edward J. Madden** has led a multi-dimensional musical life as a composer/arranger, performer on trombone and piano, conductor, and music educator. He has advanced degrees from the University of New Hampshire and Boston University where he studied with former pupils of D'Indy and Sibelius.



For many years his arranging work included the writing of original arrangements for the ASU Sun Devil Marching Band. His sparkling arrangements and compositions have been heard from the Rose Bowl Parade to New York's Carnegie Hall.

Madden continues to maintain these many faceted activities presently centered around his composing, recently completing a large choral work, as conductor of the Boston University Alumni Concert Band, as Music Director of Boston's legendary Vincent Show and as leader of his own society/swing orchestras. He makes in his home in Westwood, Massachusetts and spends some of the winter months in his new home in Fountain Hills, Arizona.

## •Program•

*The Courtly Dances from "Gloriana," Op. 53* Benjamin Britten  
March Pavane Galliard March  
Coranto Morris Dance Lavolta (Played without pause)  
**Michael Watts, Guest Conductor**

*Twilight (written for Martin Schuring)* Christopher Dedrick  
**Martin Schuring, Oboe Soloist**

*Symphony No. 6 for Band* Vincent Persichetti  
Adagio-Allegro Allegretto  
Adagio sostenuto Vivace

## •Intermission•

*Fantasia on "Gaudeamus Igitur"* Edward Madden

Elegy

Edward Madden

**Samuel Pilafian, Tuba Soloist**  
**Edward Madden, Guest Conductor**

*An Original Suite*

Gordon Jacob

March

Finale

Intermezzo

**Michael Watts, Guest Conductor**

## •Music Notes•

*Gloriana* was commissioned by the Royal Opera House, Covent Garden, for the Coronation of Queen Elizabeth II. The story concerns the later years of the reign of Queen Elizabeth I and her relationship with Robert Devereaux, the Earl of Essex. The prominent use of wind instruments in the orchestral suite, Opus 53a, is reminiscent of the predominance of winds and percussion in the original Elizabethan dance music, and makes this an effective subject for the band transcription prepared by Jan Bach.

*Symphony No. 6 for Band* (1956), commissioned by Washington University of St. Louis, could have been called *Symphony for Winds*, following as it did, the *Symphony No. 5 for Strings*. Persichetti, however did not wish to avoid the word "band." He wrote, "Band music is virtually the only kind of music in America today...which can be introduced, accepted, put to immediate wide use, and become a staple of the literature in a short time."

*Fantasia on "Gaudeamus Igitur"* The Latin words mean "Let us be Joyful," with a connotation of collegiate merrymaking, "*Gaudeamus Igitur*" is a famous 19th Century Latin student song which has had a long enduring life as the *finale* of Brahms' "*Academic Festival Overture*." Madden's *fantasia* on the tune is light hearted, with rich harmonies and brilliant

## •ASU Symphonic Band Personnel•

### Piccolo

Julee Avallone

### Flute

Sarah Andrew\*  
Kinuka Kobayashi  
Lisa Garland  
Tereasa Payne  
Deborah Sagers  
Kimberlee Goodman  
Andrea Hounjet  
Cheryl Muller  
Katie Faber  
Monica Sauer

### Oboe

Erik Behr+  
Krista Riggs+  
Tim Trost (E. Hn.)

### Bassoon

Rachel Whipple\*  
Timothy Wiggins  
Nathaniel Parker

### E♭ Clarinet

Tsuhsin Lin

### B♭ Clarinet

Deborah Bish\*  
Mary Lollis  
Marie-Eve Simart  
Amy Parks  
Katie Helms  
Kim Ritchard  
Mike Hoerber  
Mark Goerner

Ben Baron  
Marisa Sharer  
Melonie McCown  
Bert Six  
James Parkinson  
Chris Wolf  
Linda Richardson

### Bass Clarinet

Amy Badstubner\*  
Alina Perez  
June Wagner

### Saxophone

Kevin Gorman\* (Alto)  
Steve Kirchoff (Alto)  
David Duarte (Tenor)  
Steve Meier (Baritone)

### Cornet & Trumpet

Steve Stratman\*  
Gary Leopold  
Joseph Bowman  
Mark Richardson  
Russ Perlman  
Kenneth Hepner  
Natalie Bruno\*  
Joe Gudorf

### French Horn

Gary Moss (Asst.)  
Eric Egle\*  
Andrew MacDonald  
Matt Smith  
Christine Zeis  
Jennifer Wheelwright

### Tenor Trombone

Steven McAllister\*  
Jason Malloy  
Richard Bass  
Christopher Niileksela

### Bass Trombone

Mathew McCann  
Eric High

### Euphonium

Brian Wilson\*  
Kelly Thomas  
David Zajdzinski

### Tuba

Charles Kerrigan\*  
Michael Jacobetz  
Johanna Schmidke

### Percussion

Ryan Watson\*  
Alexis Attwood  
Ryan Anthony  
Gabriel Lugo  
Casey Farina  
Chris Reidy

### String Bass

Chris Long\*  
Emilio Gonzalez

\*Section Leader  
+Co-Principal



orchestration...and also a touch of academic formality in its structure. *Elegy* is an unusually quiet, plaintive piece for solo tuba and band. It is a music conceived to convey the essence of the meaning of the word; a mournful or contemplative poem. It was written in September of 1997 in memoriam after the sudden passing of Taylor Roland, a personal friend of the composer and performer on the tuba.

## •Richard E. Strange•

Dr. Richard E. Strange, Professor of Music and Director of Bands at Arizona State University since 1974, received degrees from Wichita University, the University of Colorado, and Boston University (Doctor of Musical Arts - Performance). In Boston he studied with George Madsen (Flute) and Pasquale Cardillo (Clarinet), both members of the Boston Symphony Orchestra. He started his career in 1950 as band director and teacher of all music classes in the Grade and High School at Zenda, Kansas (for 10 weeks until taken into the U.S. Army toward the end of the Korean war). After a stint in the army as a bandsman, he returned to Kansas and became band and choral director at Clifton High School, and teacher of all instrumental music classes at Clifton Grade School from 1951-58.

Dr. Strange has served as guest conductor with the U.S. Marine Band, the U.S. Air Force Band, the U.S. Army Band (Pershing's Own), the Armed Forces Bicentennial Band, the U.S. Army Field Band, the U.S. Coast Guard Band, the Dallas Wind Symphony, the Texas Wind Symphony, the Fresno Wind Symphony, and *L'Orchestre d'Harmonie de la Ville du Havre* at "Coups de Vents, 1991 and 1994" in Le Havre, France. Before coming to Arizona State University, he was Director of Bands at Carnegie-Mellon University, where his bands gave six annual concerts in New York's Carnegie Hall, preceded by two in New York's Town Hall. While in Pittsburgh, he played oboe with the Pittsburgh Symphony Orchestra on a per-service basis.



Active in the educational field as a clinician and guest conductor, he has conducted many Regional and All-State groups, plus both the University Wind Ensemble and Symphonic Band at the National Music Camp, Interlochen, Michigan. In the past few years he has conducted, judged or given clinics in Canada, Japan, The Netherlands, Germany, Switzerland, Italy, England, France, Guam, and New Zealand. Also, he is active in the community orchestra field. During the time he resided in Pittsburgh, he conducted both the Carnegie Civic Symphony Orchestra and the Butler County Symphony Orchestra. He is now Music Director of the 90-member Tempe (Arizona) Symphony Orchestra. In 1994, the City of Tempe presented Dr. Strange with an award honoring his 20 years of service as founding conductor of the Tempe Symphony Orchestra.

Equally adept in the field of jazz and musical theater, Dr. Strange played saxophone, clarinet and flute professionally for many years with big bands such as Buddy Morrow, Les Elgart, Ted Herbert, and Isaac Hayes (of "Shaft" fame). Also, he played the "lead" book, doubling all the woodwind instruments, with the Pittsburgh Civic Light Opera, plus backup and "pit" bands that accompanied many famous Broadway singers and television stars, such as Carol Channing, Ethel Merman, Eddie Fisher, Andy Williams, Englebert Humperdinck, and Bill Cosby.

Dr. Strange is listed in the *International Who's Who in Music and Musicians Directory*, *Who's Who in American Music*, and many other publications of similar nature. From 1977 until 1987, he wrote ten columns per year, entitled "Band Music Reviews," for *The School Musician, Director and Teacher* magazine. He now writes for *Bandworld* magazine. Also, Strange was Editor of the first and second revisions of the "Selective Music List for Bands" published by the *National Band Association*.

In January of 1989, Dr. Strange received an "Award For Excellence In Teaching Music" at the "Golden Anniversary Convention" of the Arizona Music

Educators Association. In December of 1991, he received the **Distinguished Service to Music Medal** given by Kappa Kappa Psi, the National Honorary Band Fraternity (only the 16th medal presentation to a Symphonic Band Conductor since the award's inception in 1963.) Also, in December of 1991, he received the National Band Association's **Citation of Excellence** for "outstanding contribution to bands and band music." In July of 1995, Dr. Strange was named "**Outstanding Bandmaster of the Year**" by the members of the Kansas Bandmasters Association at their annual meeting. At the same time, he was inducted into Phi Beta Mu's (international bandmasters fraternity) **Hall of Fame**. In December of 1995, Dr. Strange was elected to the **Academy of Wind and Percussion Arts**, an award sponsored by the National Band Association in recognition of a "truly significant and outstanding contribution to the furthering of the excellence of bands and band music." (He is only the 44th recipient of the honor since its inception in 1970.) In September, 1996, Dr. Strange was presented the Wichita State University *Distinguished Alumnus Award* for "...extraordinary accomplishments [that] have enhanced the university's proud history as the university enters its second Century..." In January of 1998, Dr. Strange was named **Music Educator of the Year** by the Arizona Music Educators Association (only the second person to receive this award while teaching at Arizona State University). The award, given each year since 1964, is the highest honor bestowed by the AMEA.

Dr. Strange was elected to the American Bandmasters Association in 1968. He is a Past President of that organization, and Executive Director of the American Bandmasters Association Foundation. He is also a Past President of the College Band Directors National Association.

### •Robert C. Fleming•

Dr. Robert C. Fleming, is Professor of Music, Associate Director of Bands and Director of the Sun Devil Marching Band at Arizona State University. He has degrees from Indiana University of Pennsylvania, Carnegie-Mellon University, and Southern Illinois University (Doctor of Philosophy in Secondary Education). His Arizona State University Sun Devil Marching Band received the **1991 Sudler Trophy** distinguishing it as one of the most outstanding marching band programs in the country. Prior to his arrival at Arizona State University in 1974, he was Director of Bands at the University of Tennessee at Martin, Tennessee.



In addition to his duties at Arizona State University, Professor Fleming is an active marching and concert band clinician, adjudicator, and a member of numerous professional organizations. He served on the Board of Directors of the American Bandmasters Association from 1990 to 1993. He is past President of the PAC 10 Band Directors Association and past National President of the National Band Honorary Fraternity, Kappa Kappa Psi. He currently continues to serve the fraternity as a member of the Board of Trustees. In 1989, Dr. Fleming was installed as an honorary member of Alpha Chapter of Phi Beta Mu, the International Bandmasters Fraternity. In 1993, Dr. Fleming received the **Bohumil Makovsky Memorial Award to Outstanding College Band Directors** from Kappa Kappa Psi and in September of 1994, he received the Professional Fraternity Association's **1994 Faculty Award of Excellence**.