

# Archaeoclimatology and Ancient Mediterranean Landscape Dynamics



*By J. Brett Hill, Alexandra Miller,  
Elizabeth Wentz and C. Michael Barton*

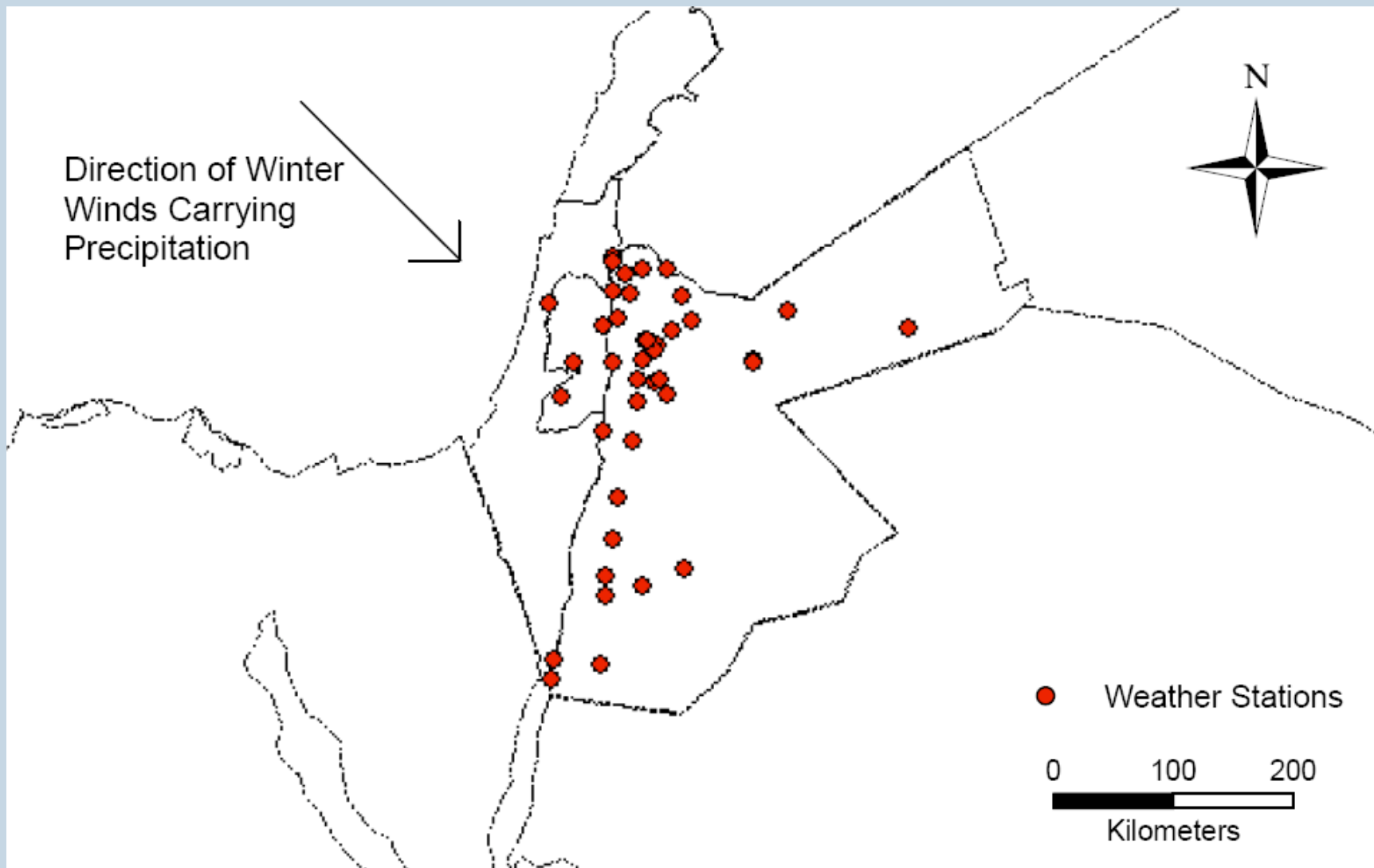
**In - Climate, People and Behavior,  
A Symposium in Honor of Reid Bryson**

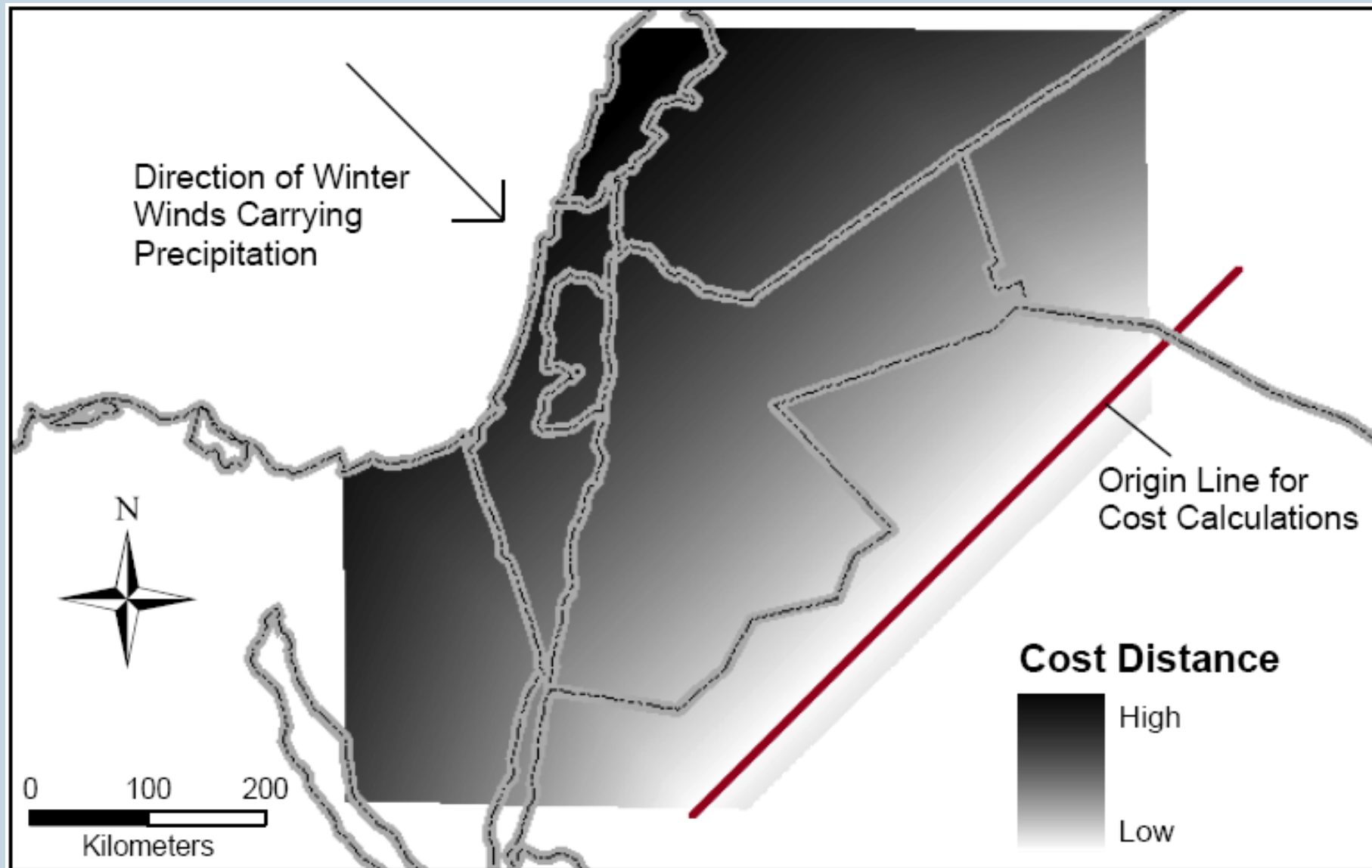
**2008 Society for American Archaeology Annual Meeting  
Vancouver, BC**

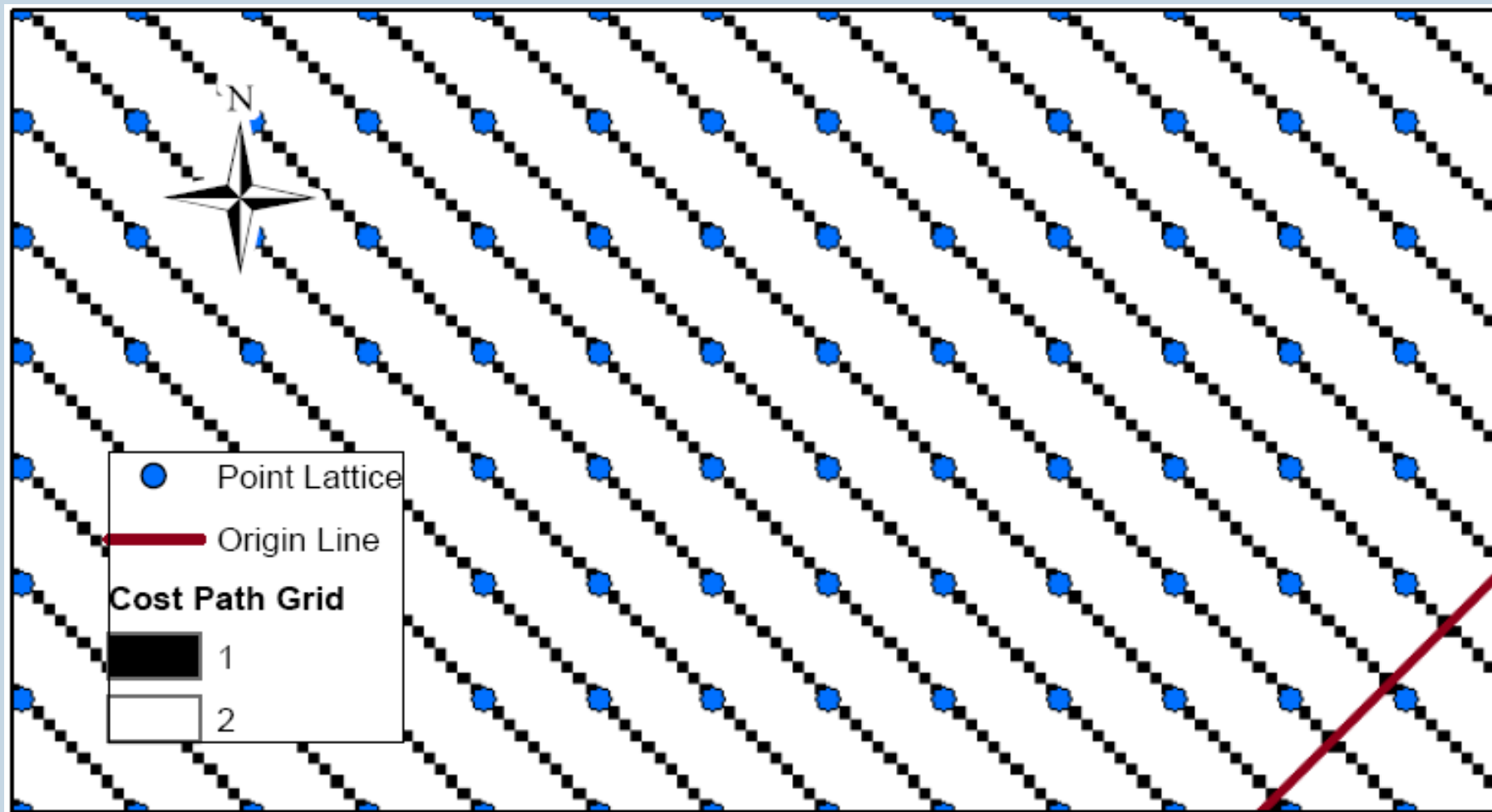


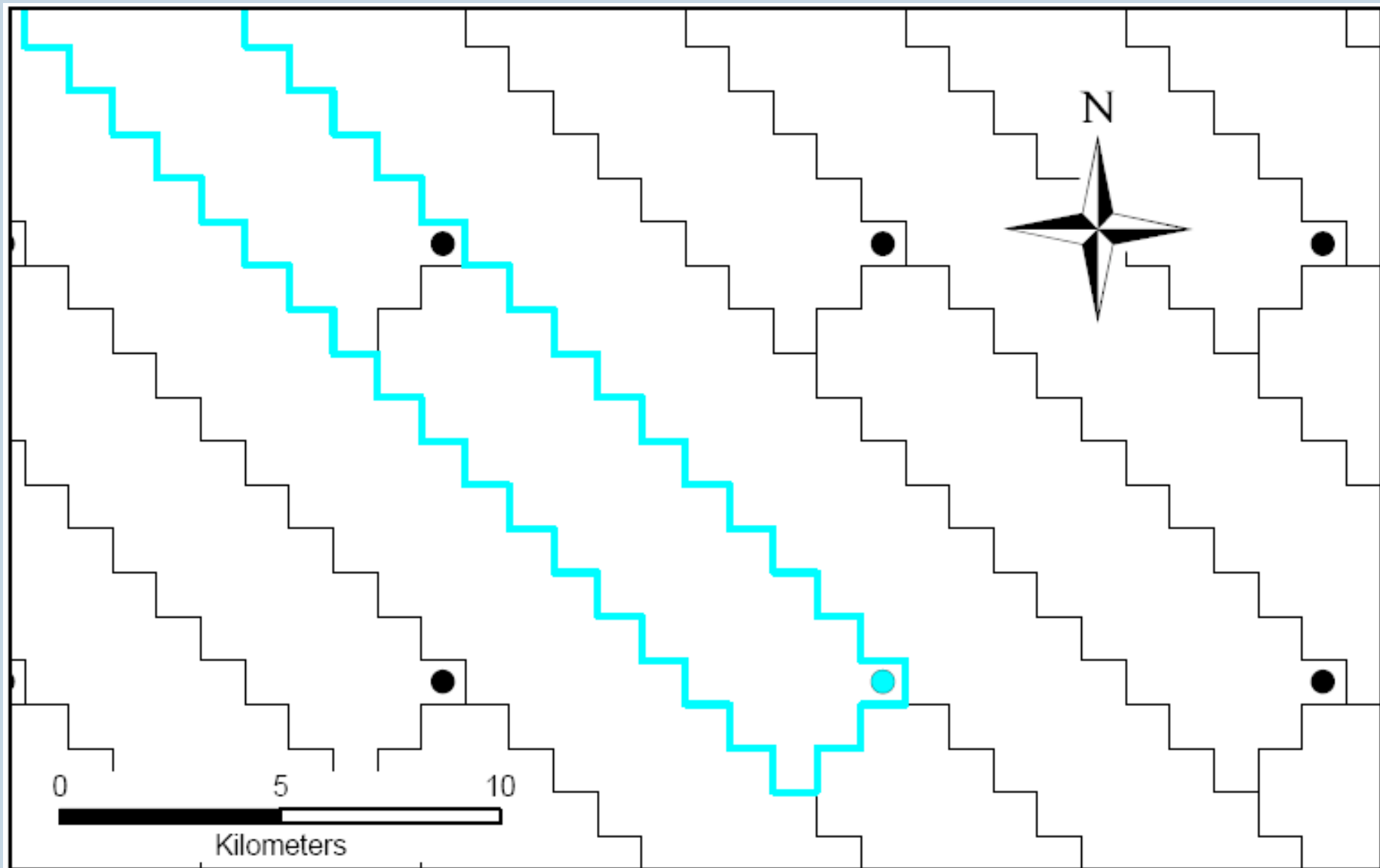






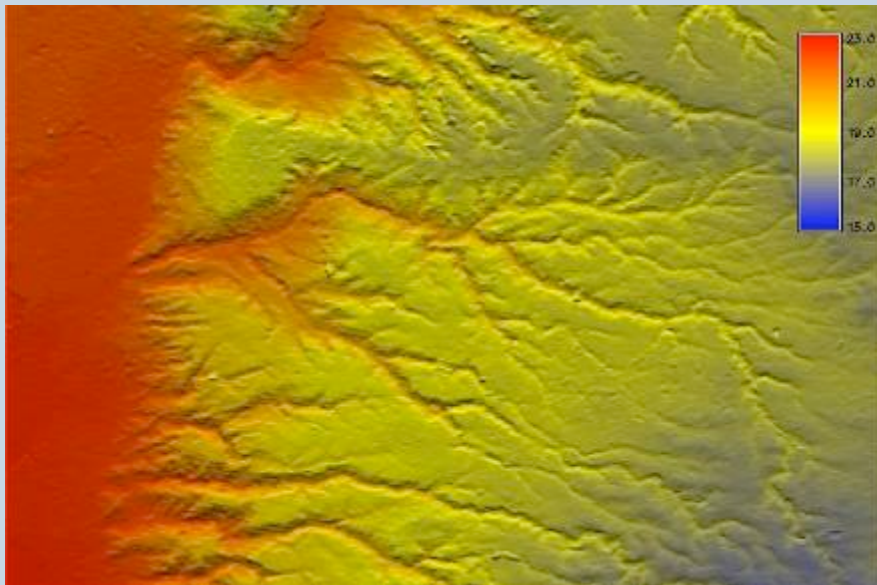




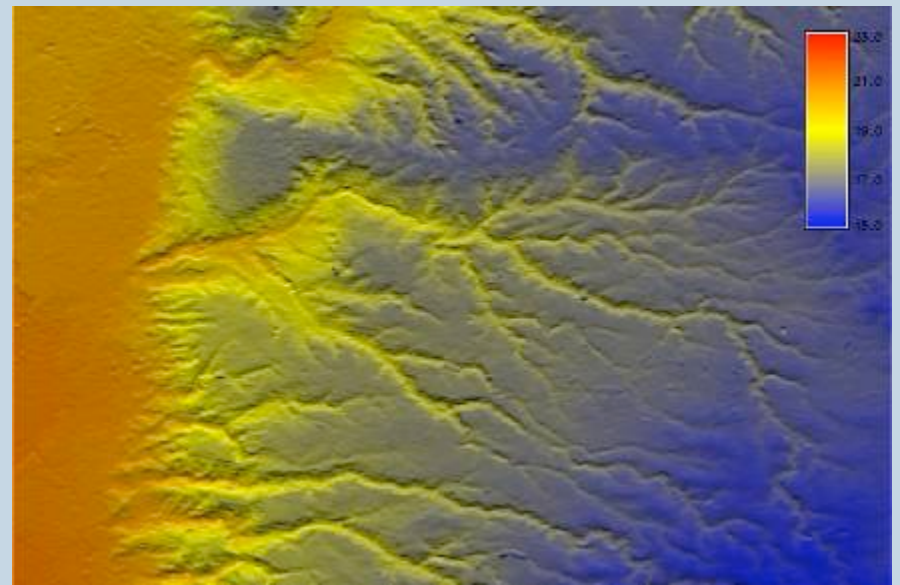




## Example of Results of for Temperature in Wadi Ziqlab Area



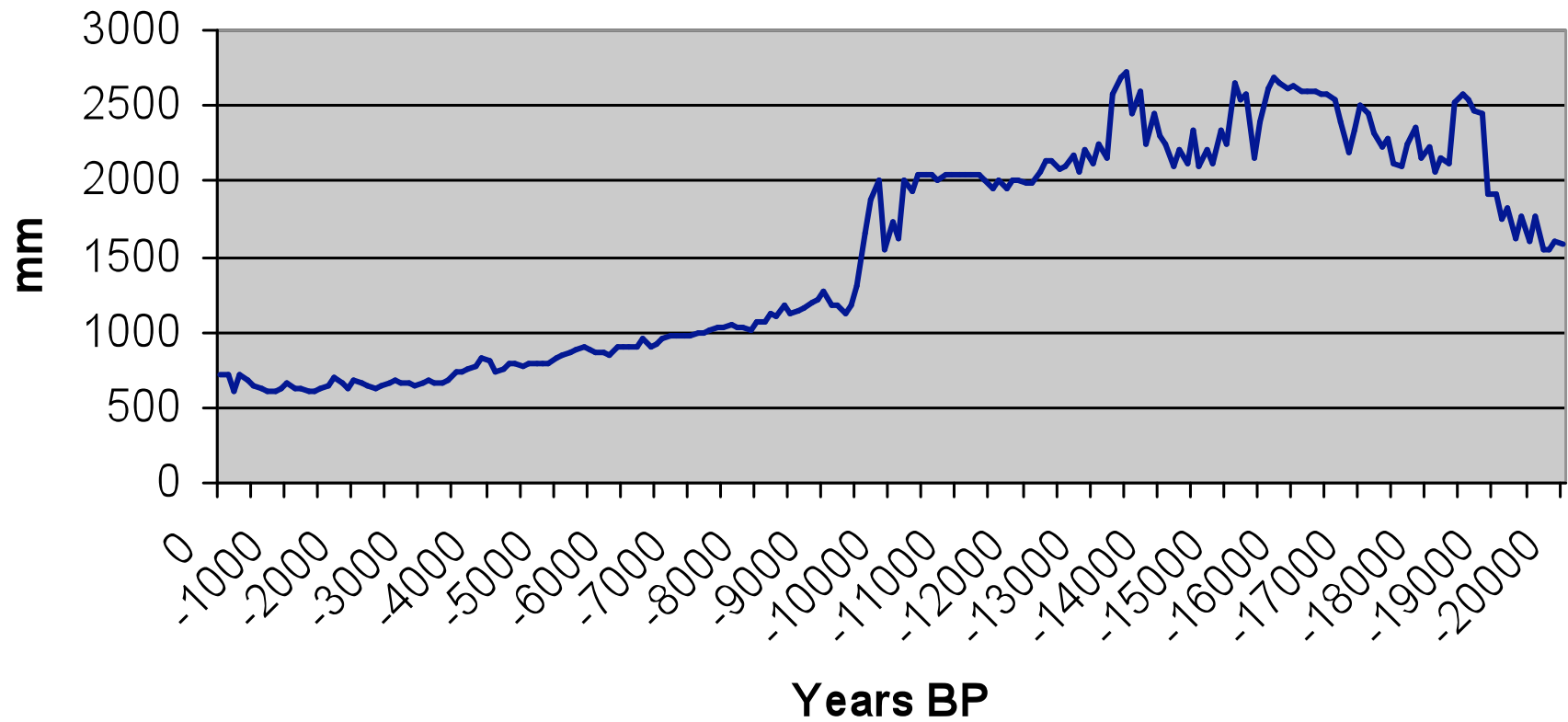
**Mean Annual Temperature 6000 BP**

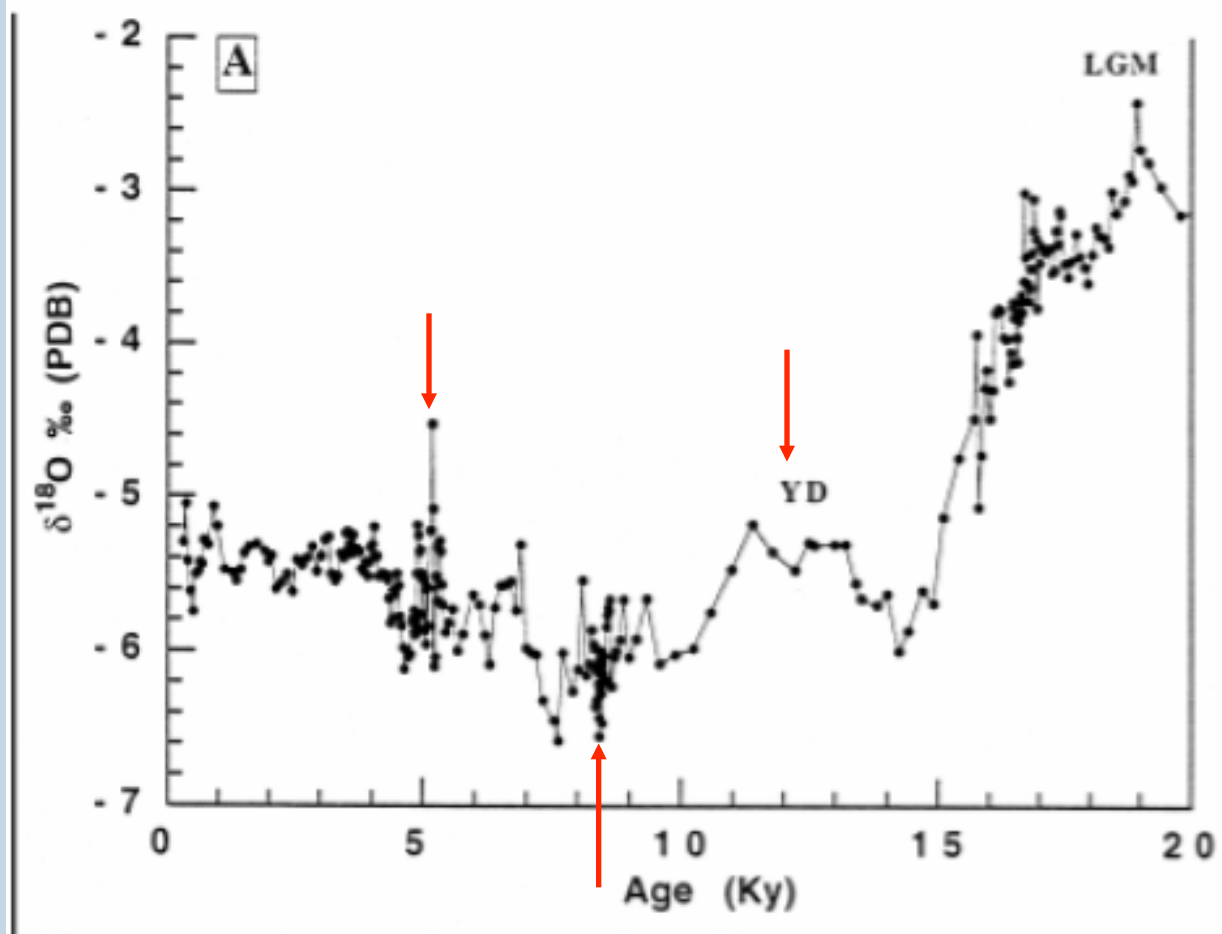


**Mean Annual Temperature 8000 BP**

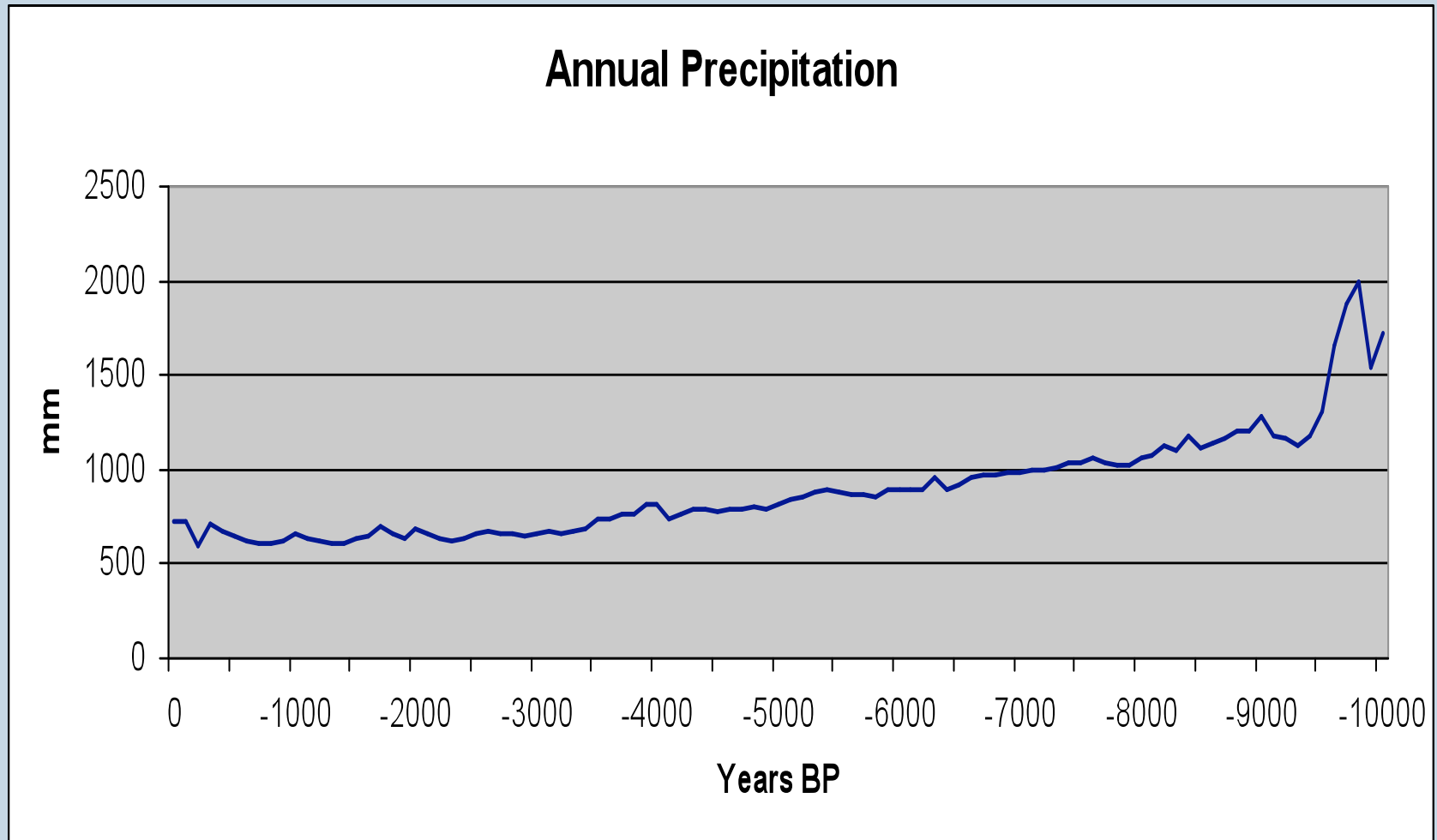
## Precipitation Trends through Time at al-Arroub

### Annual Precipitation

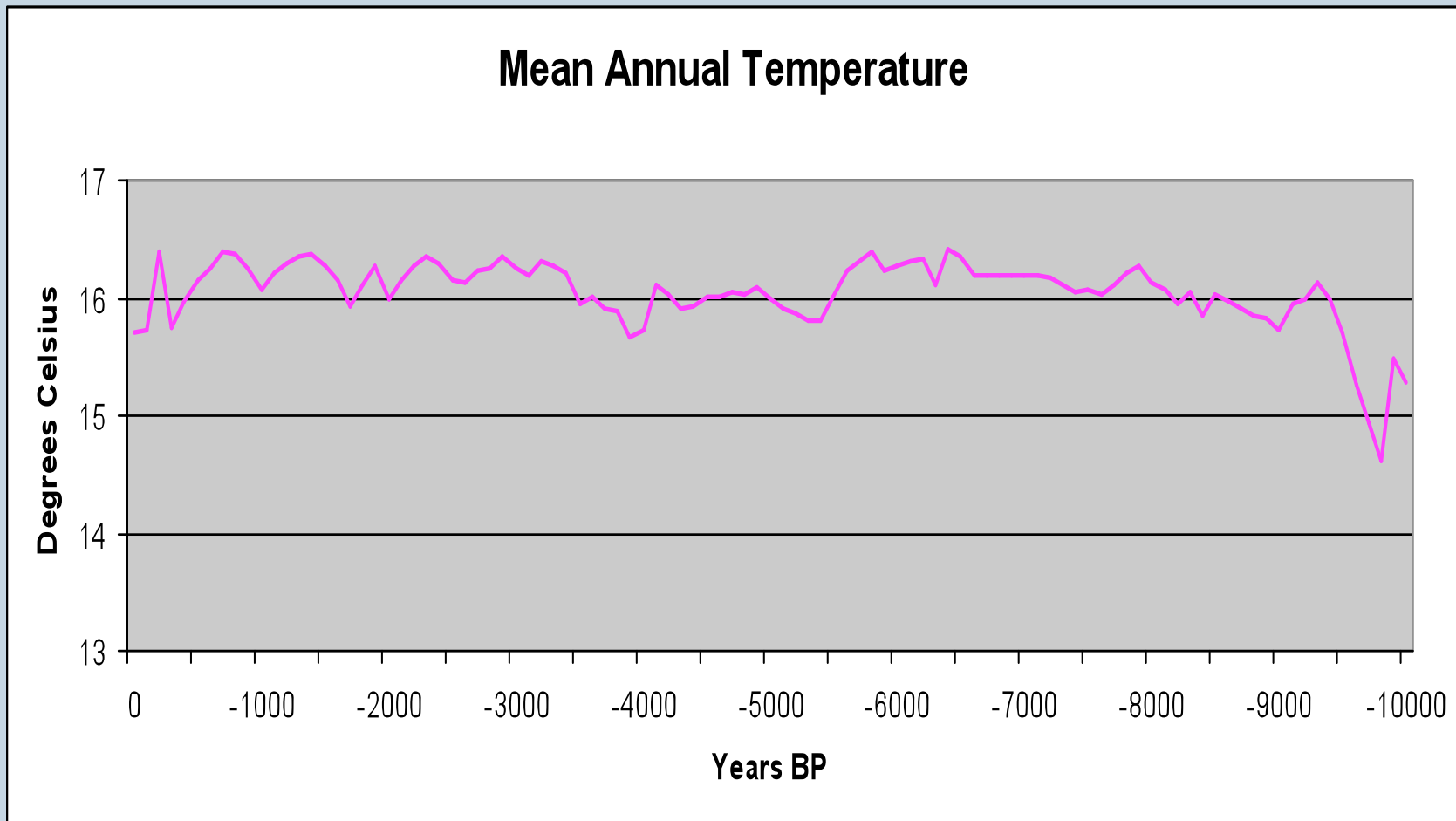


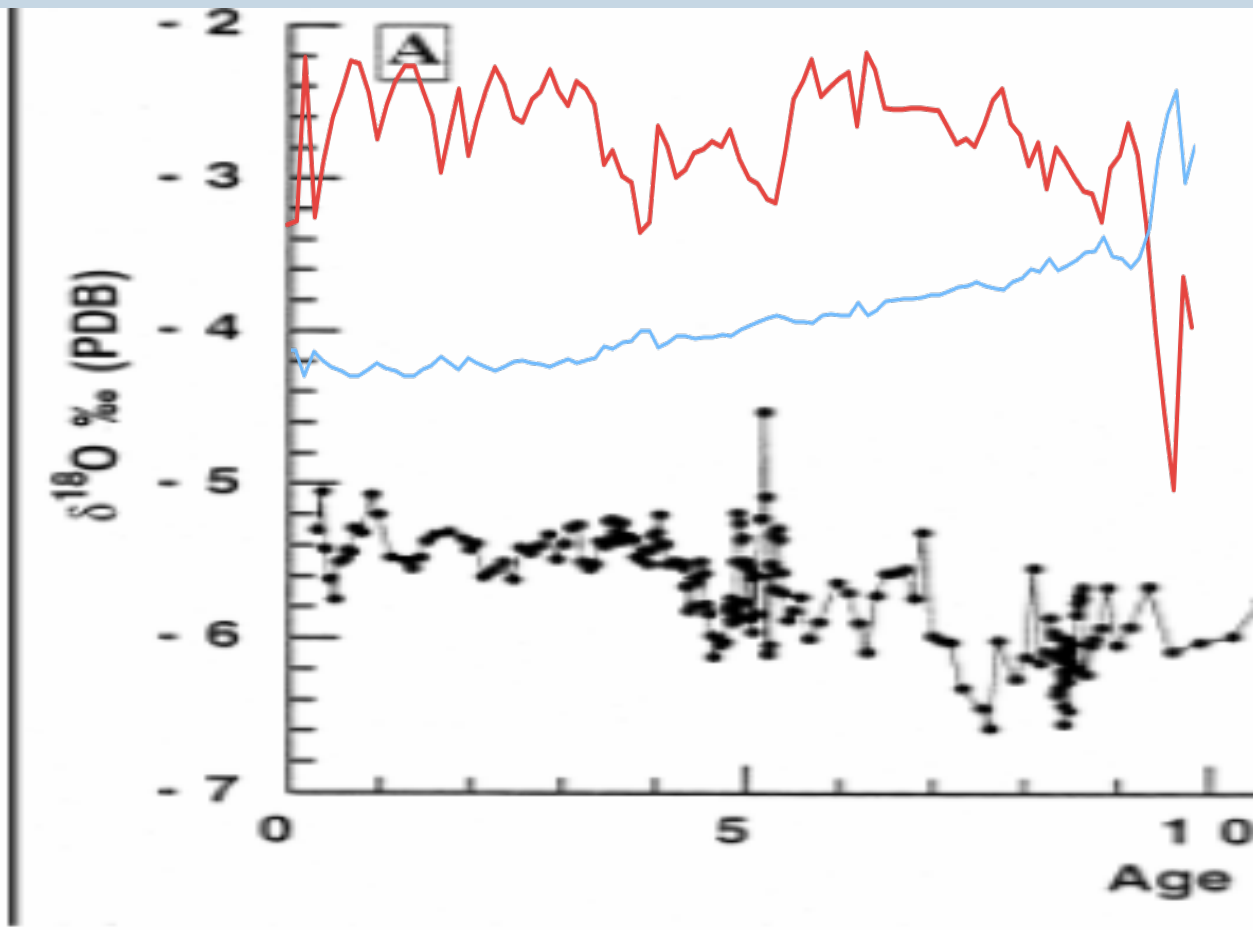


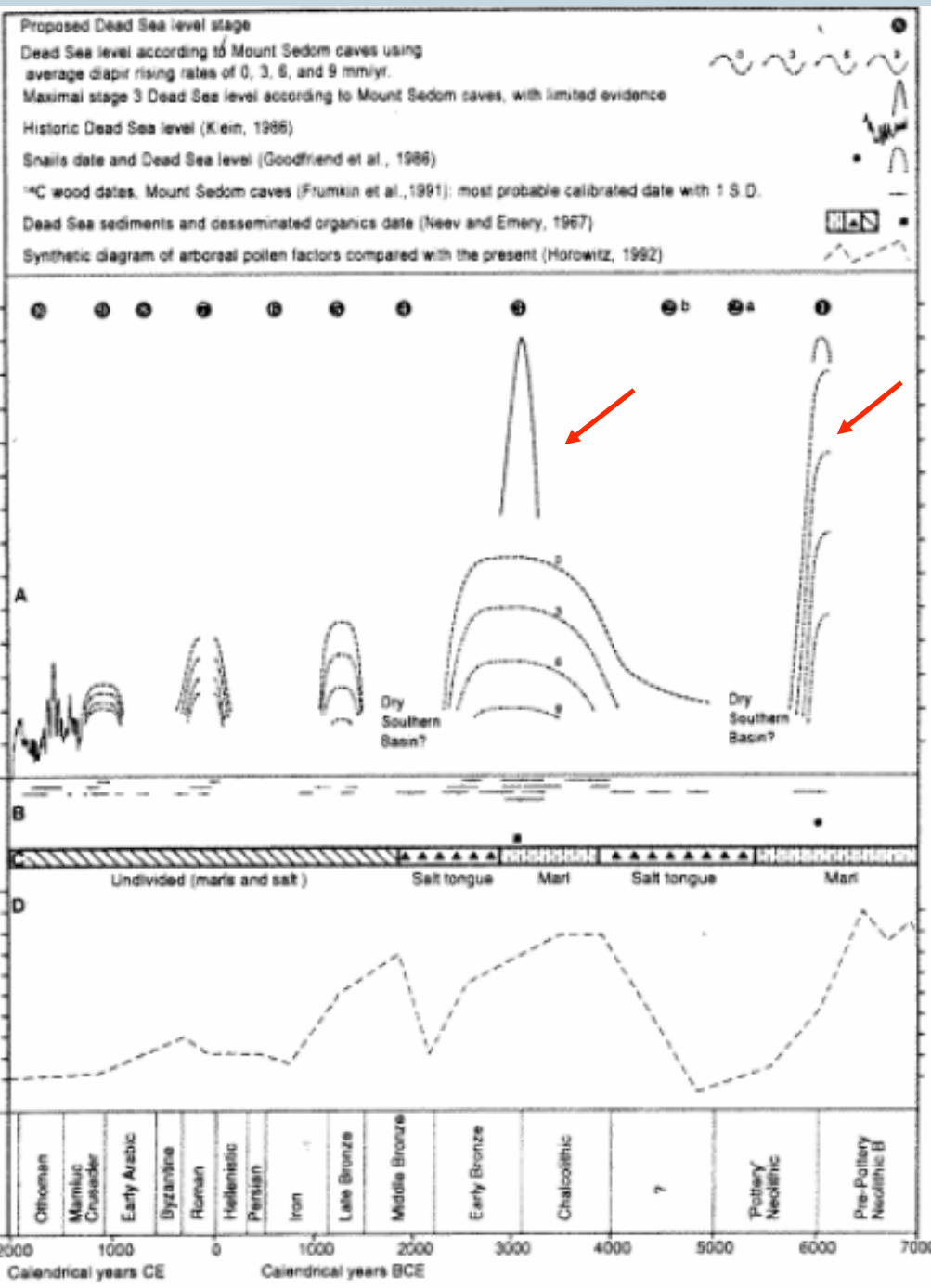
## Precipitation Trends through Time at al-Arroub

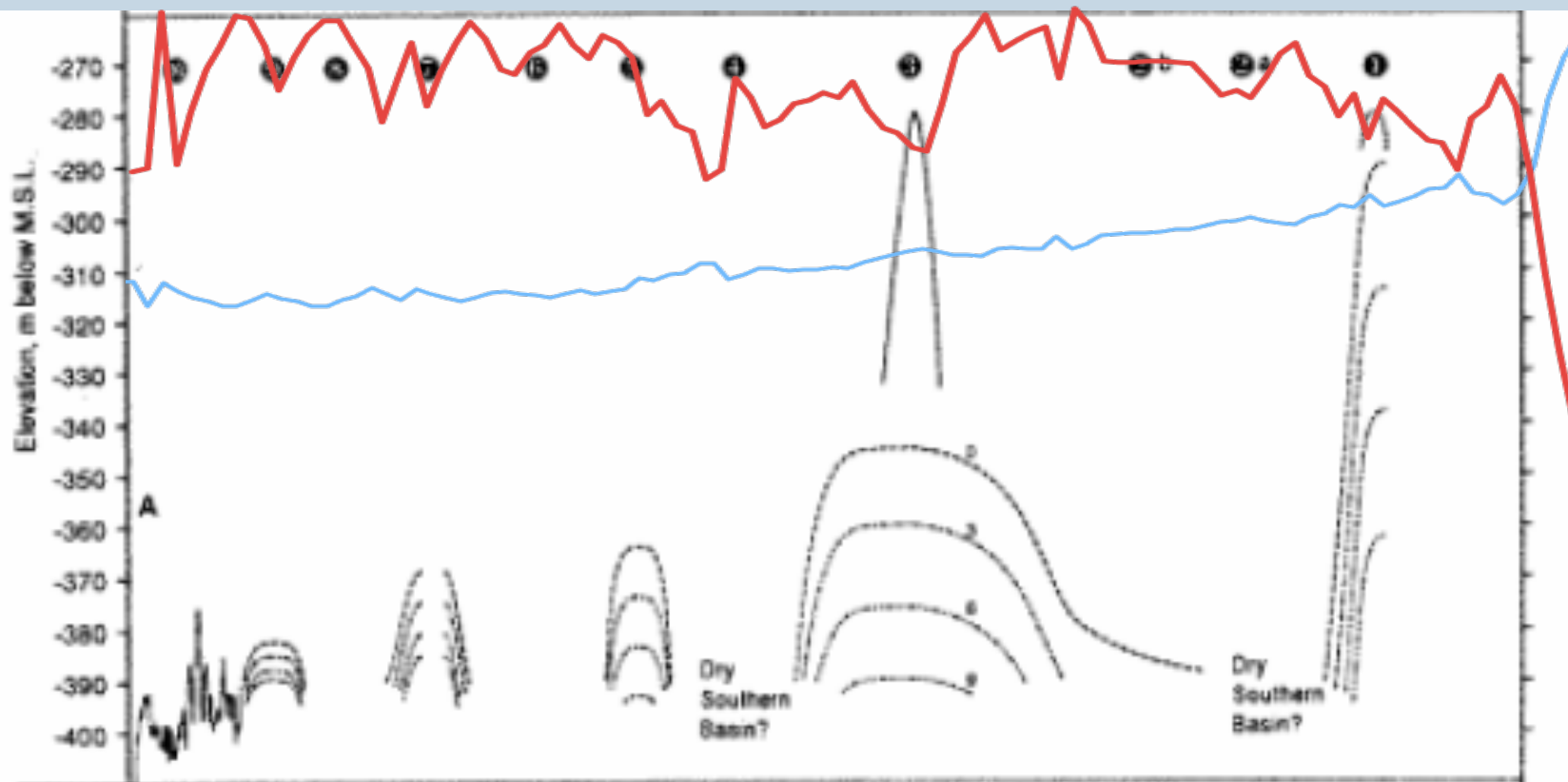


## Temperature Trends through Time at al-Arroub



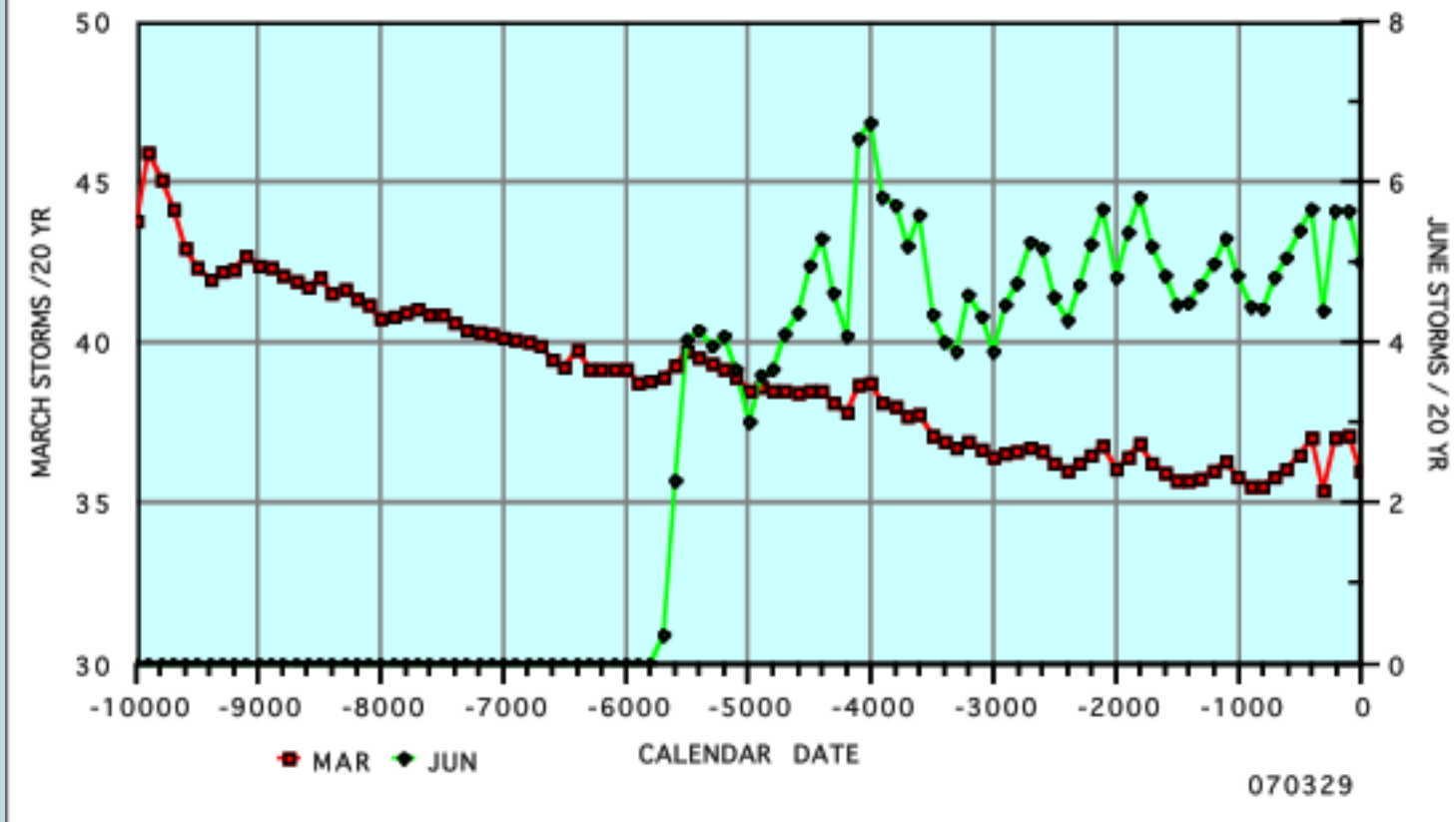








MODELED WESTERLY STORM HISTORY  
SOUTH OF TURKEY



# Mediterranean Landscape Dynamics

*Landuse and Landscape Socioecology  
in the Mediterranean Basin*

An NSF Biocomplexity in the Environment  
Project *BCS-0410269*



National Science Foundation  
WHERE DISCOVERIES BEGIN

