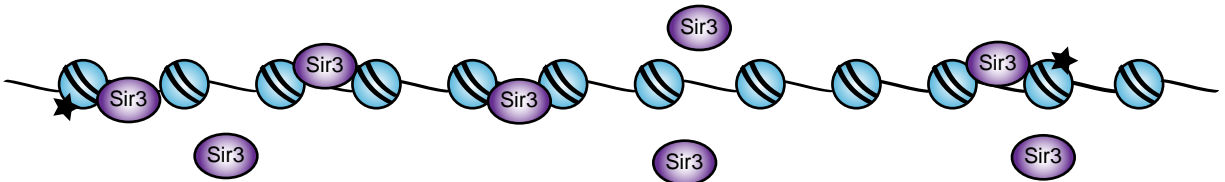
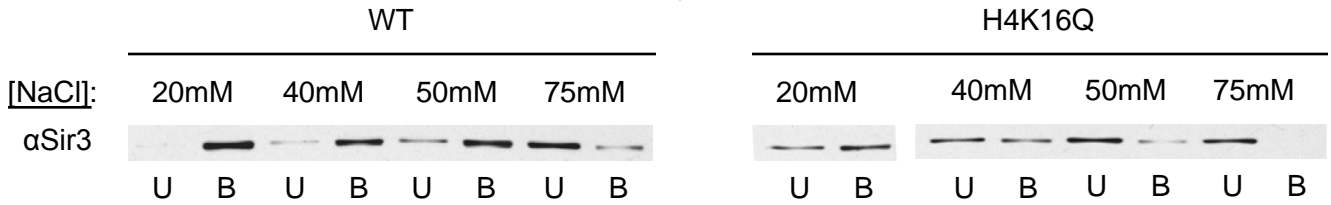
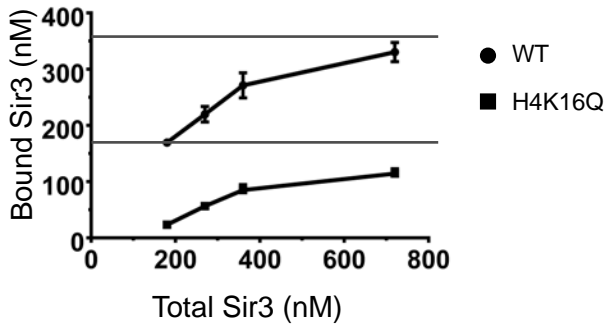
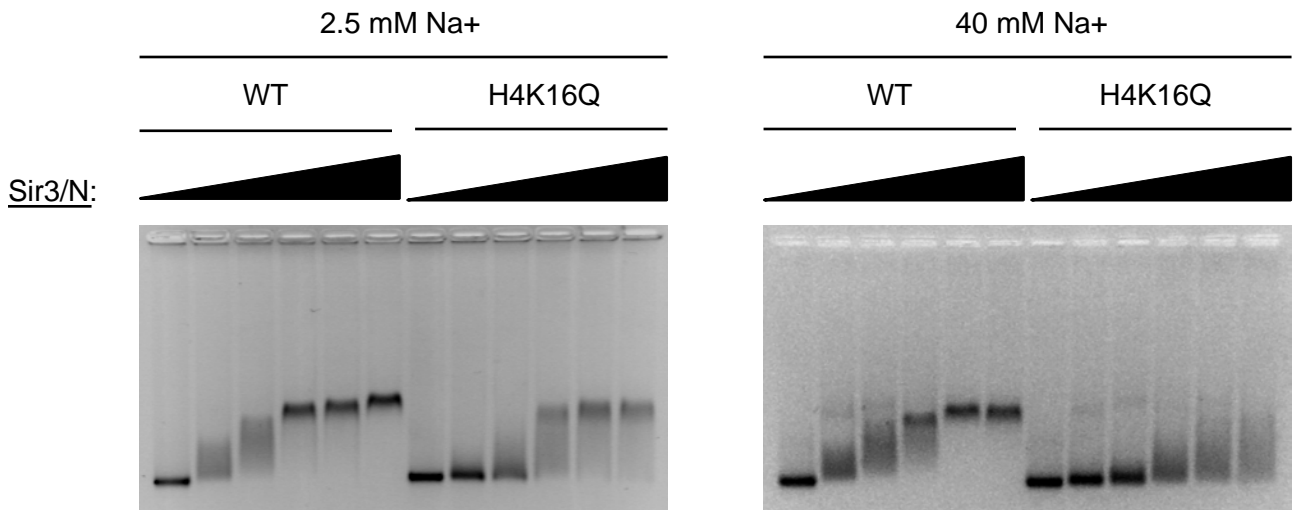
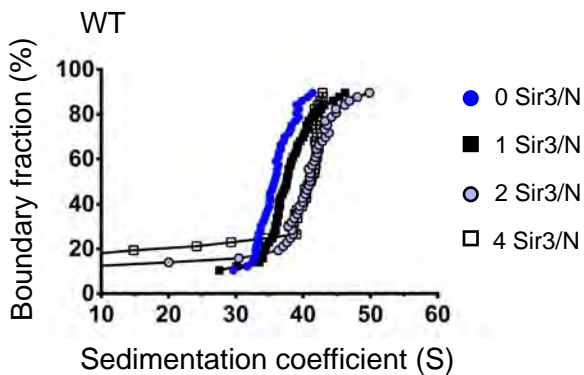
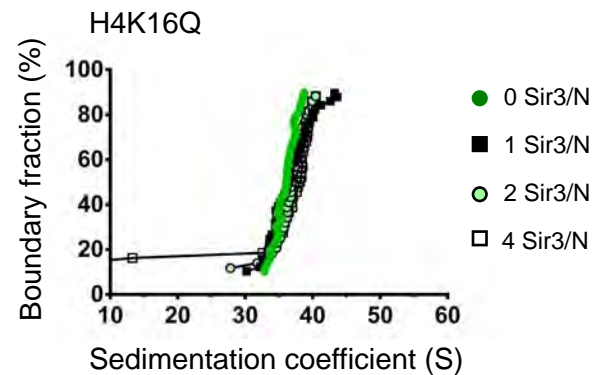
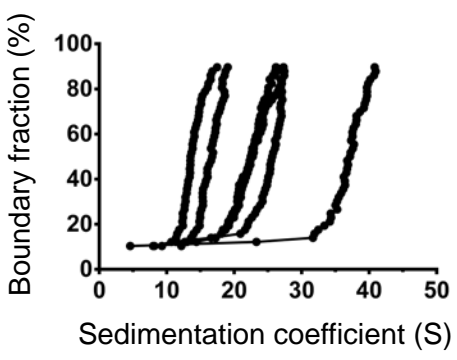
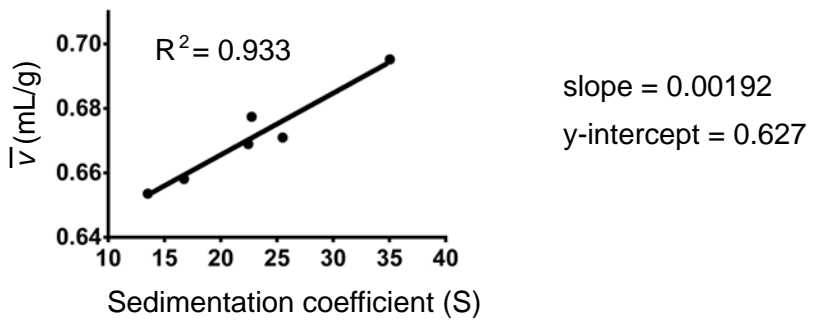


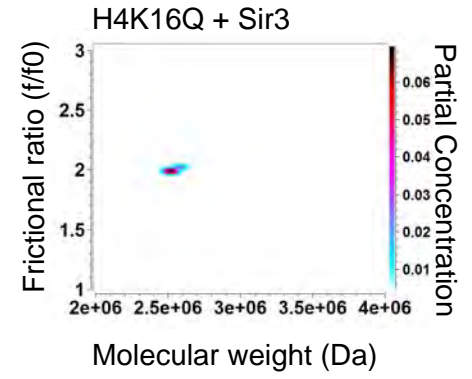
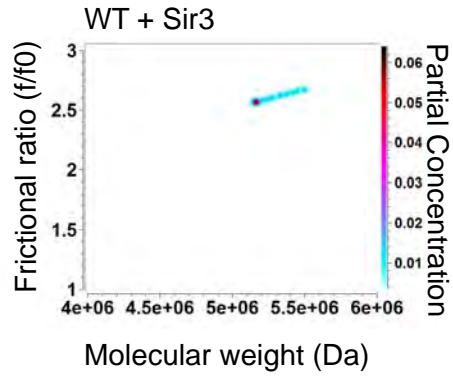
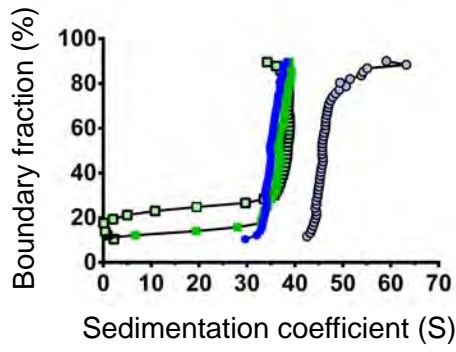
a

streptavidin bead capture
Sir3 Western

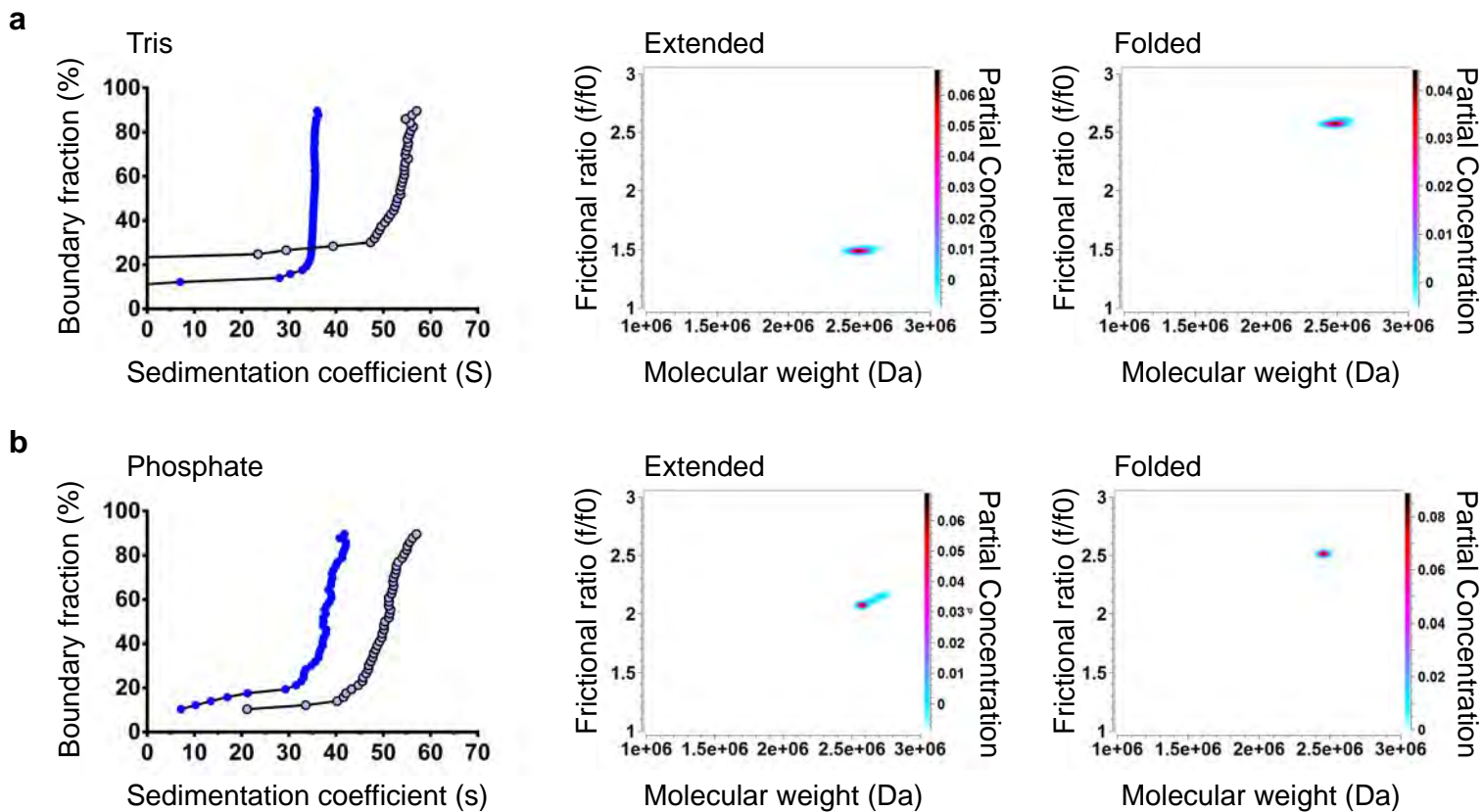
**b****c****d****e**

a**b****c**

Sed. Coefficient (s^{-13})	\bar{v} (mL/g)	Mol. Weight (MDa)	Frictional Ratio
13.517	0.654	1.8714 (1.8307, 1.9122)	5.1595 (5.0840, 5.2350)
16.737	0.658	2.0831 (2.0147, 2.1515)	5.2967 (5.1809, 5.4125)
22.444	0.669	2.2274 (2.2223, 2.2326)	4.2431 (4.2389, 4.2474)
22.753	0.677	2.2628 (2.2313, 2.2944)	3.7372 (3.7018, 3.7727)
26.670	0.671	2.2293 (2.1968, 2.2619)	3.0956 (3.0651, 3.1262)
35.043	0.695	2.5851 [2.6144] (2.4896, 2.6806)	2.4714 (2.4077, 2.5351)

a**b**

	\bar{v} (mL/g)	Mol. Weight (MDa)	Sir3	Frictional Ratio
WT	0.694	2.5663 [2.6144] (2.5526, 2.5801)	N/A	2.2302 (2.2223, 2.2381)
H4K16Q	0.697	2.6667 [2.6144] (2.6356, 2.6978)	N/A	2.1616 (2.1446, 2.1787)
WT + Sir3	0.715	5.2706 (5.2297, 5.3115)	23.9	2.5824 (2.5694, 2.5953)
H4K16Q + Sir3	0.702	2.5380 (2.4936, 2.5824)	N/A	1.9981 (1.9746, 2.0215)



c

	\bar{v} (mL/g)	Mol. Weight (MDa)	Frictional Ratio
Tris	0.775	2.5109 [2.6144] (2.4730, 2.5487)	1.4925 (1.4778, 1.5073)
Tris + MgCl ₂	0.576	2.4943 [2.6144] (2.4536, 2.5351)	2.5842 (2.5547, 2.6137)
Phosphate	0.699	2.6163 [2.6144] (2.4995, 2.7330)	2.0966 (2.0341, 2.1591)
Phosphate + MgCl ₂	0.595	2.4558 [2.6144] (2.4378, 2.4737)	2.5157 (2.5032, 2.5281)

