

Supplementary Figure 1

1. Wet-up



2. Pre-incubation (4h)



Light

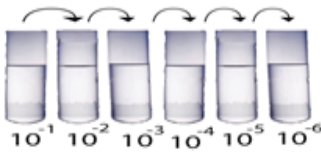


Dark

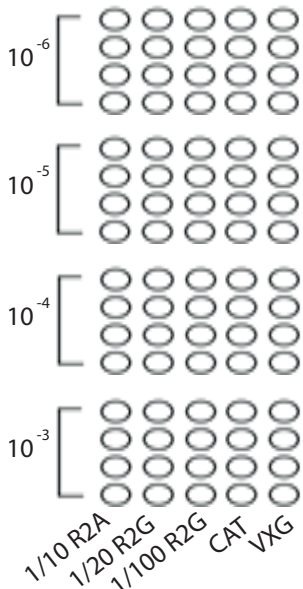
3. Samples were individually blended



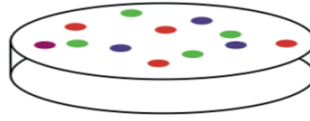
4. After blended they were ten fold diluted



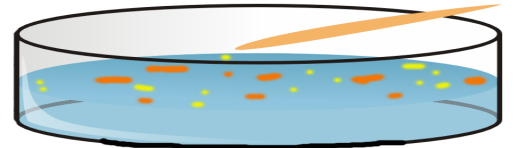
5. Each dilution was inoculated onto 5 different types of media in four different plates



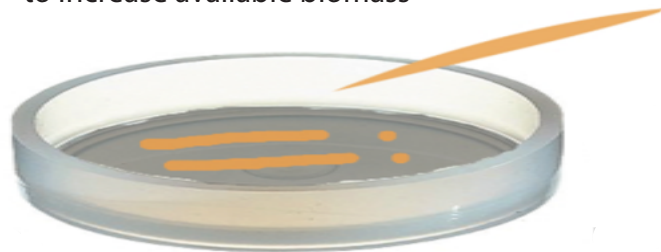
6. Colonies appearing on different days were differentially colored



7. Colonies were picked with a tooth pick according with their appearance in the plates



8. Picked colonies were spread on new plates to increase available biomass



9. Further purification steps were performed to obtain axenic cultures from single colony forming unities



10. After axenic cultures were obtained, cells were resuspended in 30% glycerol and stored in a -80°C freezer

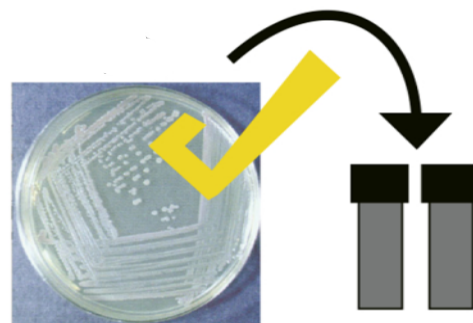


Figure legend. Scheme representing isolation procedures (for description, see text)